

The logo features the letters 'AWF' in a large, bold, sans-serif font. Below it, the words 'INNOVATIVE SOLUTIONS' are written in a smaller, all-caps, sans-serif font. The 'I' in 'INNOVATIVE' is highlighted in a light blue color, while the rest of the text is in a dark grey color. The background of the entire page is a light grey gradient with a complex, white wireframe pattern of overlapping lines and shapes, resembling a technical drawing or a 3D model of a structure.

AWF
INNOVATIVE SOLUTIONS

Reveal sheet solution

AWF VERTRIEBS GMBH
GEWERBESTRASSE 8
5201 SEEKIRCHEN
AUSTRIA

Tel +43/ 6212/ 93 020
Fax +43/ 6212/ 93 020 90
office@awf-solution.com

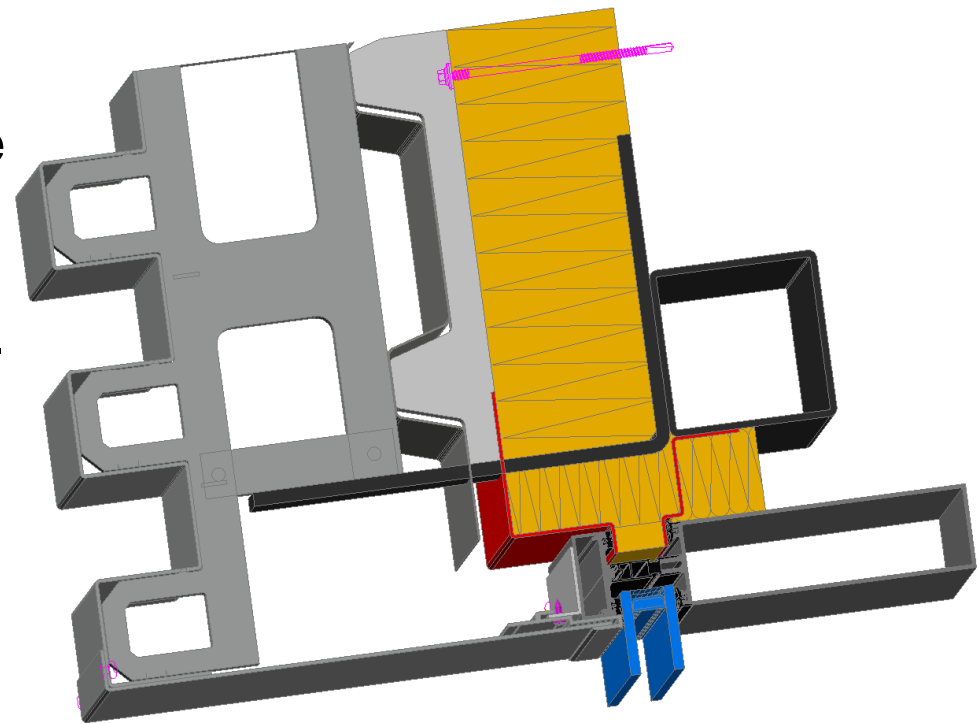
WWW.AWF-SOLUTION.COM

Reveal sheet solution



The completely new AWF-Reveal sheet system has been developed according to the demands and requirements of Audi architects and performers under compliance of the Audi-CI.

This trademarked system does not only comply the visual guideline throughout but also convince through its simplicity and easy to assembly execution. Subsequent it can be easily and economically assembled at all glassfacade systems.



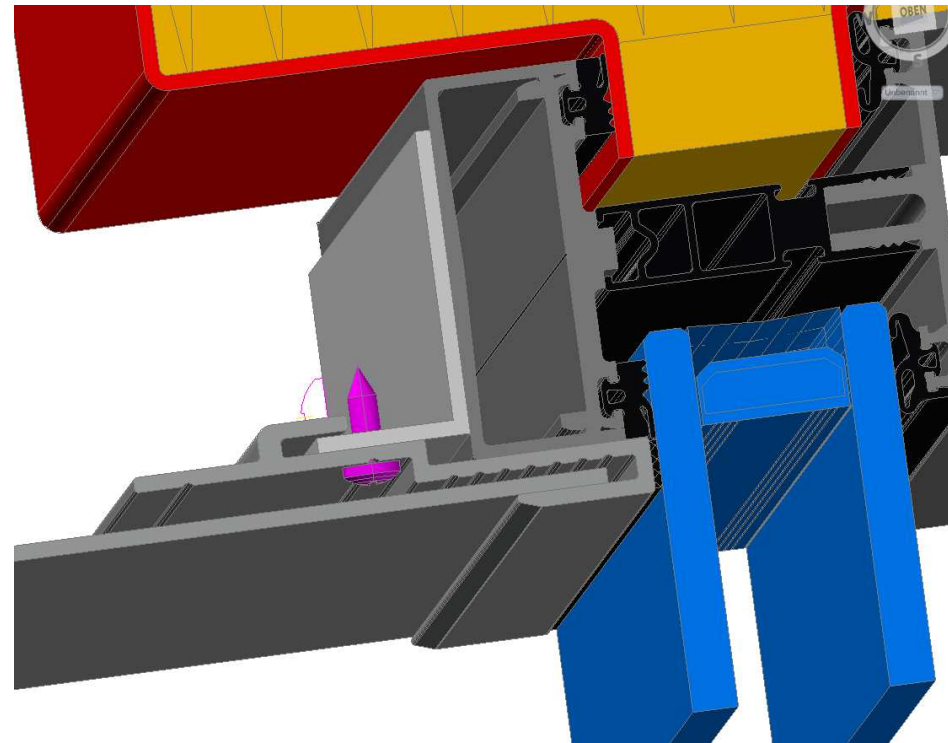
3D-cross section _System AUK-TS

Reveal sheet solution

Description:

It can be used with every cladding systems, whereby the reveal- or connection endplates are hold in a slim and deep attachment slot/groove of the specifically developed extruded profiles (AUK-L_1). In this attachment slot/groove any motions, tolerances and constructional inaccurancies can be adjusted without any problem.

Whatever the scope is (glassfaçade windows, doors, and so on) the effort for the adjustment to the necessary natural dimension is easily and quickly done.



3D-cross section _System AUK-TS

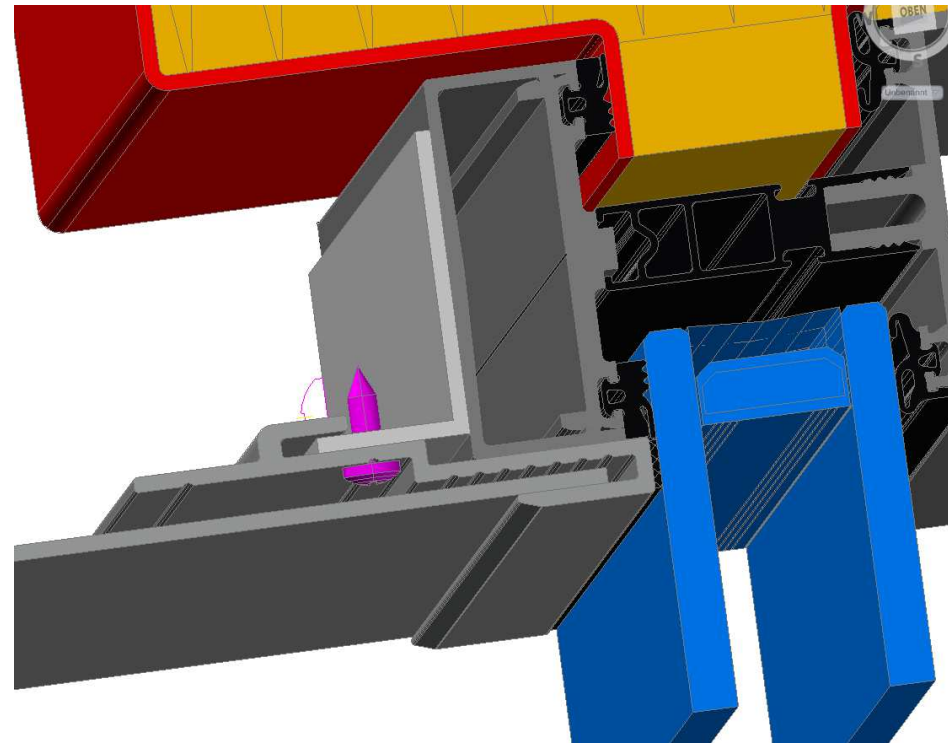
Reveal sheet solution

Description:

Despite higher quality (no visible fastening of the reveal sheets) smaller installing costs occur, as all components are delivered prefabricated. Now, the natural measure on site has not anymore been taken first in order to produce and install the elements.

Necessary fastening elements as well as the cut edge of the reveal sheets are always hidden.

It can be easily dismantled and reused without any damage or destruction.



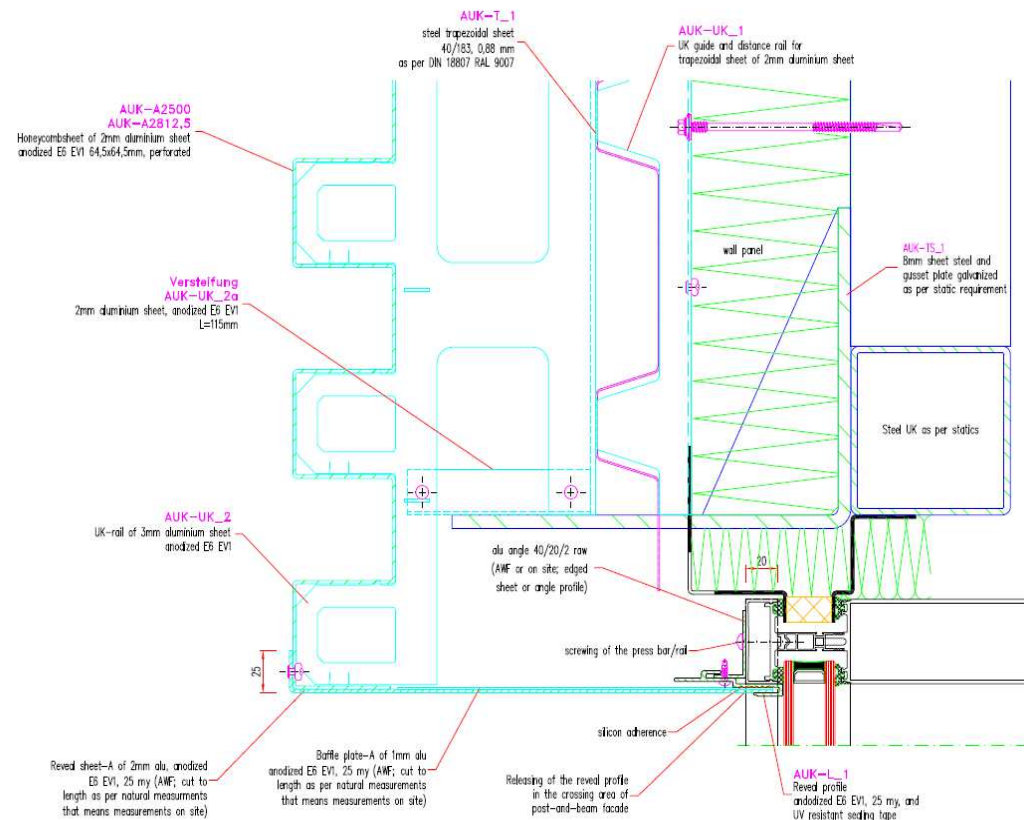
3D-cross section _System AUK-TS

Reveal sheet solution

System-Glass façade:

Installation:

1. Screw selective aluminum angles into the pressure bar
2. Attach and fix aluminium-extruded profile **AUK-L_1** (E6/EV1 anodized)
3. Insert reveal sheet A (2mm Alu E6/EV1 anodized) into the aluminium profile **AUK-L_1** and rivet it front side onto the honeycomb. (at oversize, cut to size reveal sheet)
4. Fix splice plate-A (1mm Alu E6/EV1 anodized) behind the reveal sheet-splice



V-cross section _System AUK-TS

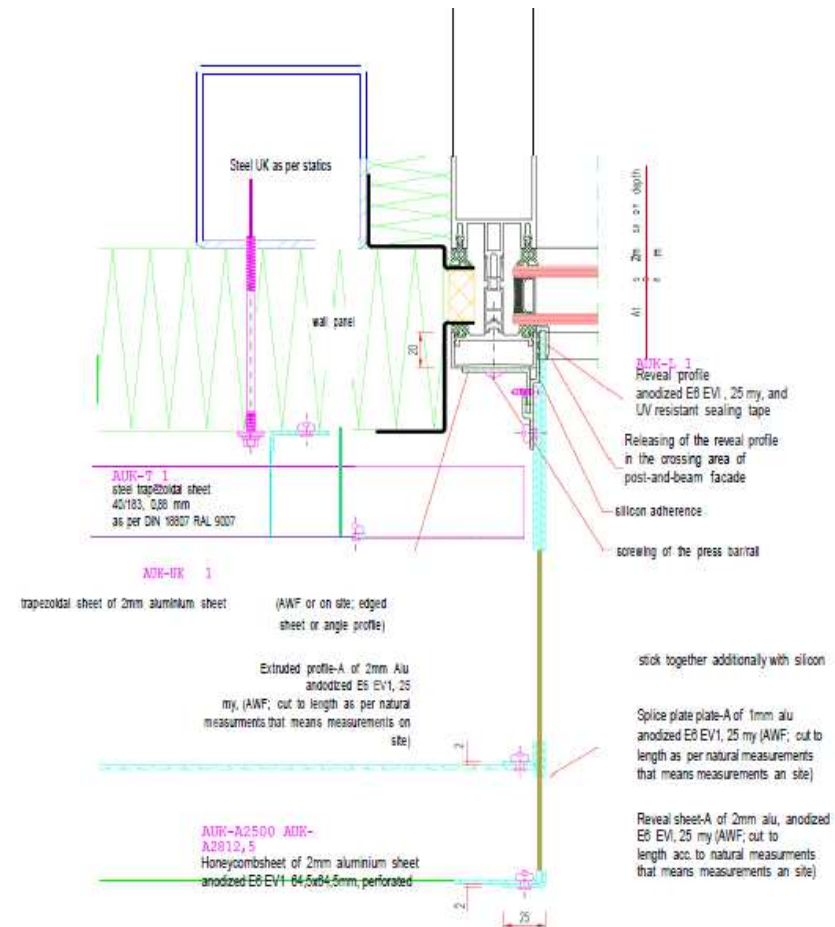
Reveal sheet solution



System-Glass façade:

The most important advantage

- Simple
- Neat
- Pre-producible
- Adaptable
- Easy to assemble

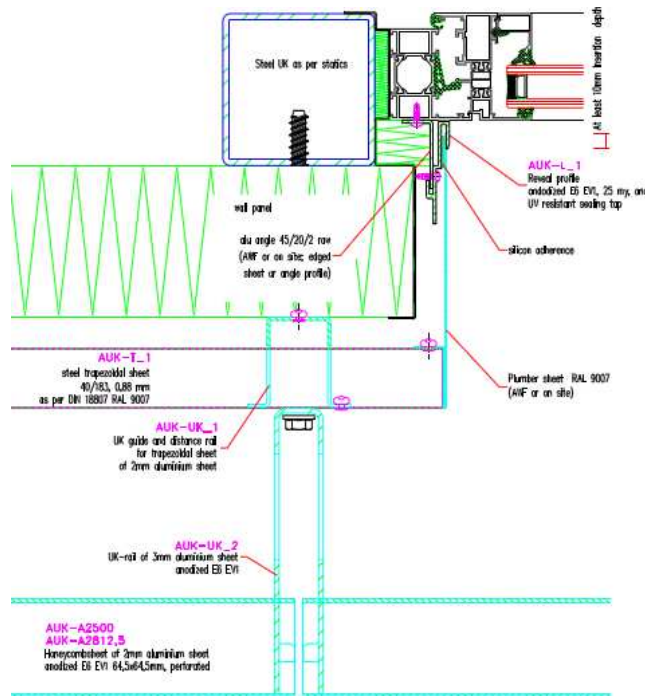


H-cross section _System AUK-TS

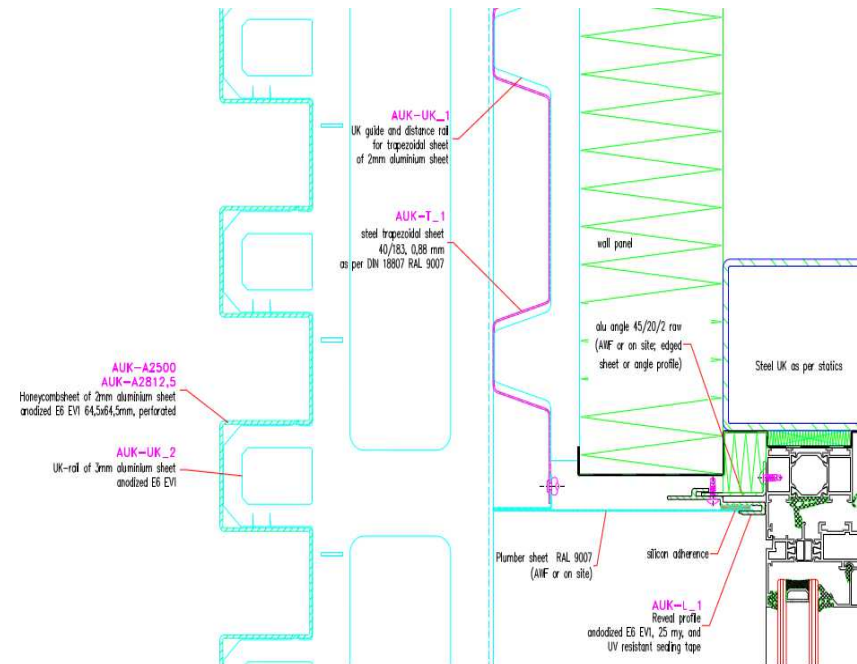
Reveal sheet solution

System-window-connection:

The system assembly is similar to the glass façade. However, the aluminium profile **AUK-L_1** will be covered RAL 9007 and the reveal sheet will be made of Aluminium sheet plate, afterward grooved, cut to size and put in. Then the sheet will be riveted into the bottom bead of the trapezoidal sheet.



H-cross section_System AUK-TS



V-cross section_System AUK-TS

**Thank you
for
your attention!**